

Impressive benefits - fair contributions

What ver.di members should
definitely know!

ver.di

Core services

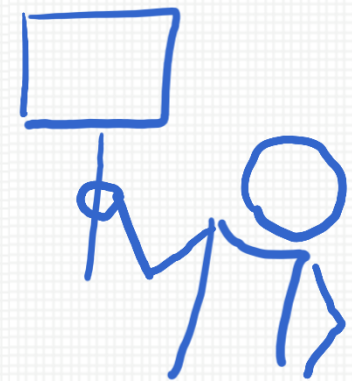
Collective bargaining

Support during
strikes and lockouts

Advice on **labour, social + civil
service legislation**

Advice for **unemployed** and
workers topping up their income
with additional benefits

Scope for
networking and active involvement



Further services from ver.di & Co.

**ver.di
trade union**

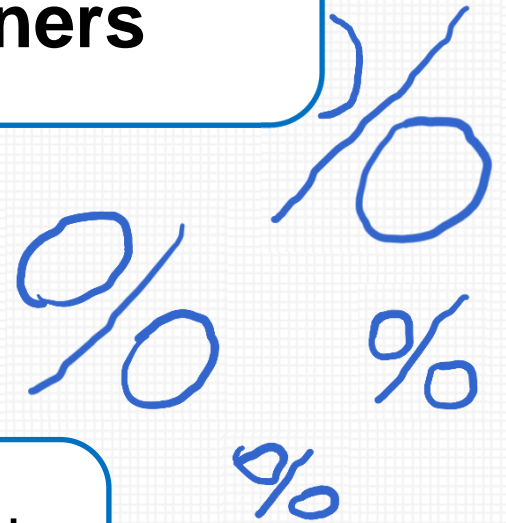
**ver.di
Member Service**

**External
partners**

Statutory mandate. Discounts and concessions in areas such as social care, culture, education, health...

usually also for family
members

not from membership
subscriptions



Employment history I

Cover through GUV/Fakulta



Trade union support
organisation:

A benefit comparable to professional and
public liability insurance
(e.g. key insurance, traveling to work and
to ver.di ...)

€24 annual
contribution



Employment history I

Cover through GUV/Fakulta

Ab 2023: das Verletzengeld.



Erleidest du einen Unfall und bist länger arbeitsunfähig, endet nach 6 Wochen die Lohnfortzahlung des Arbeitgebers. An deren Stelle tritt ein gesetzliches Verletzengeld. Dann hast du etwa 80% deines Arbeitsentgeltes zur Verfügung. Wir helfen dir, deinen Lebensstandard und ggf. den deiner Familie zu sichern. Und das bis zu 400 Tage lang, wenn es nötig ist. Von uns bekommst du 12 € pro Tag.

Selbstbehalt



Unterstützung durch Übernahme des Selbstbehaltes bei bestehender Kasko- bzw. Haftpflichtversicherung pro Schadensfall einmalig bis maximal 300 Euro bei Wegeunfällen sowie bei Unfällen auf dem Weg zu und von gewerkschaftlichen Veranstaltungen und der damit verbundenen Nutzung eines Privatfahrzeugs.

Beispiele [🔗](#)

Schlüsselverlust



Schadensersatzbeihilfe je nach Lage des Einzelfalles bei Abhandenkommen von Dienstschlüsseln. Voraussetzung hierfür ist eine begründete Regressnahme durch den Arbeitgeber bzw. Dienstherrn. Die Leistungsobergrenze ist von 100.000 Euro auf 150.000 Euro gestiegen.

Beispiele [🔗](#)

Schadenersatzbeihilfe



Schadenersatzbeihilfe, je nach Lage des Einzelfalles, bei arbeits- oder beamtenrechtlich begründeter Inanspruchnahme durch den Arbeitgeber oder Dienstherrn. Dies gilt auch bei Schäden an Dienstfahrzeugen, soweit anderweitiger Versicherungsschutz nicht vorrangig in Anspruch zu nehmen ist. Darüber hinaus bei Schädigung Dritter und Eintritt von

Wirtschaftliche Notlage



Unterstützung bei wirtschaftlicher Notlage infolge eines Schadensfalles, je nach Lage des Einzelfalles.

Beispiele [🔗](#)

Rechtsschutz



Rechtsschutz in Angelegenheiten des Straf- und Ordnungswidrigkeitenrechts.

Beispiele [🔗](#)



Employment history II

Support in the form of **application letters** online with `people@venture`

Job reference advice:
online for downloading



Employment history III

Income tax service

**Advice and income
tax return**

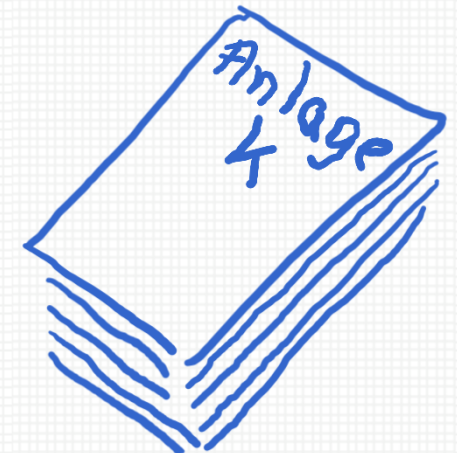
Advice available from
1.190 experts

Appointment booked
via district

Advice via email

**AI Tax Assistant
with 40% discount**

**Income tax
software**



Employment history III

Income tax service

Results of consultations 2024

Overall consultations 82.294

Refund amount € 54.000.000

Consultations via email 14.200

Number of appeals 2.187



Employment history IV

Pension-related consultations

related to statutory
pension:
**DRV insurance
advisors**



for further matters
(company pensions)
u.di e.V.

Education I

**Online-
BiZ**

ver.di education portal

Training courses for
representatives of interest
groups

Seminars for active and
educational leave

Leisure activities



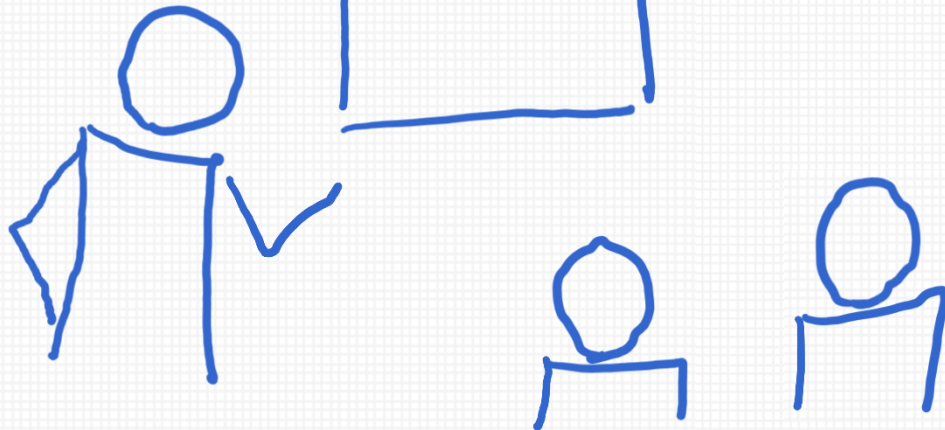
Education II

**Professional development and
continuing education**

Retraining
at **DAA**

Up to **25% discount**
from Ausbildungspark
publisher

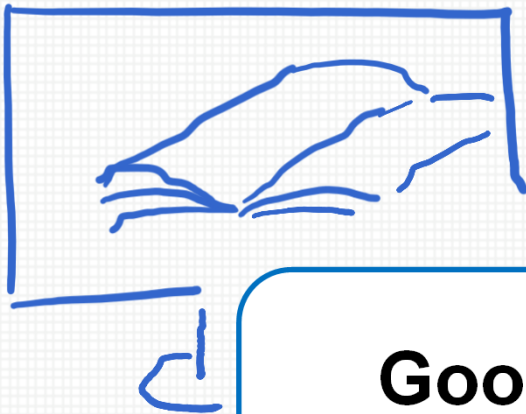
Part-time distance learning at
the **Hamburg Distance
Learning University**



Education III

ISIC - International Student Identity Card

20 hours per week
irrespective of age
Free
valid for 12 months
Application via
membership network



Google Future workshop

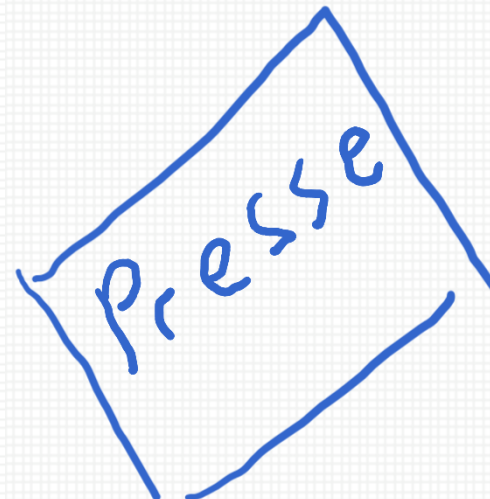
Free-of-charge self-learning
courses on digital skills (online)

Special target groups I



For the **self-employed**:
consultation and online advice

Free
press pass for full-time
journalists



Special target groups II

Group liability insurance

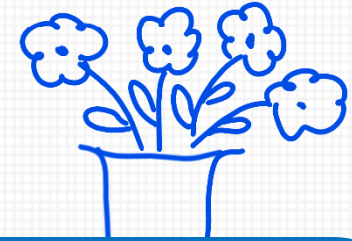


Members of
public service **fire brigades**

Members employed in the
penal system

- €10 million lump sum for personal injury and property damage
- €50.000 for loss of service keys/code cards
- €5.000 for personal equipment
- €50.000 for vehicles not subject to compulsory insurance (fire brigade)

Special target groups III



Loyalty bonus

on 2 July 2001, at least 15 years of membership in the **ÖTV/FDGB**

Amount stored in the system:

depending on contribution in 2000/01

Apply in your district within 12 months of retiring

Subsidy for grave maintenance

At least 5 years' membership of **DPG** on 2 July 2001

Amount stored in system:

approx. 50 euros for every 5 years

A selection of offers in individual districts



Potsdam: Fly in a wind tunnel with a 10% discount, go skydiving (tandem jump €209 instead of €229, licence course)

Sachsen-Anhalt North (Magdeburg): 5% discount at Selgros

Saxony West-East-South (Dresden): up to two vouchers for the consumer advice centre, discounts (approx. 20%) at Parfümerie Thiemann

Leipzig-Nordsachsen: 2x €30 voucher for consumer advice centre per year

Stuttgart: Support in dealing with local authorities, e.g. Jobcenter

In various districts advice on coping with **stress and mobbing**



Pre- and postcare



Recreational accident benefits

Per diem hospital allowance:
application in local district

Illness and death - what to do?

Brochure on preventive care €7.50



**Patient
living will
online**

Advice/information

Telephone advice on tenancy law

Mon, Tues 12 - 14, Wed 13 - 15,

Thurs 18 - 20, Fri 10 - 12

Hotline: 030 - 2 23 23 73



meine.verdi.de

individual documents, subscription receipts,
membership certificates, independent
modifications to your data, networks,
industry newsletters, and much more.

Now let's get interactive ...

The screenshot displays the 'ver.di Mitgliederservice' website. The header includes the logo, navigation links for 'ANGEBOTE PRIVATWIRTSCHAFT', 'ANGEBOTE ÖFFENTLICHER DIENST', and 'DEINE MITGLIEDSCHAFT', and social media icons. The main content area is a grid of service categories, each with a list of specific offerings. The background features a scenic image of a coastline with a blue lake and green hills.

VORSORGE & ABSICHERUNG	BAUSPAREN & BAUFINANZIEREN	INTERAKTIV
<ul style="list-style-type: none">> Vorsorge- & Versicherungsscheck> Berufsunfähigkeitsversicherung> Altersvorsorge> Unfallversicherung> Privater Rechtsschutz> Patientenverfügung	<ul style="list-style-type: none">> Baufinanzieren> Bausparen> Energetisch Modernisieren> Junge Leute & Berufsstarter*innen> Tagesgeld	<ul style="list-style-type: none">> Bewerbungshilfe> Telekom> Online-Treffen
GESUNDHEIT	HAUS & WOHNEN	REISE & FREIZEIT
<ul style="list-style-type: none">> Zahnzusatzversicherung> Krankenzusatzversicherung> Sehhilfen und Hilfsmittel> Reisekrankenversicherung	<ul style="list-style-type: none">> Turbodarlehen> Wohngebäudeversicherung> Hausratversicherung> Mietrechtsberatung	<ul style="list-style-type: none">> Hurtigruten> Hansefit> GEW Ferien> Movie Park Germany> Kabarett "Distel"
LOHNSTEUER	MOBILITÄT & HAFTUNG	BILDUNG
<ul style="list-style-type: none">> Lohnsteuersoftware> ver.di Lohnsteuerservice	<ul style="list-style-type: none">> Haftpflichtversicherungen> Cyber-Versicherung für Solo-Selbständige> Kfz-Versicherung> AVIS> GUV/FAKULTA> Zündapp	<ul style="list-style-type: none">> Google Zukunftswerkstatt> Hamburger Fern-Hochschule> International Student Identity Card

#DeinXtra

Partners for insurance

Itzehoer
Versicherung:
personal legal cover

Advantages Ergo and DBV:

- **Neutral insurance check**
- Motor vehicle cover, personal liability, official and pecuniary loss liability for civil servants and public sector employees, residential buildings, household contents, glass, accident - **up to 3% premium savings**
- Health: Supplementary health insurance of all kinds (e.g. eye care/dental) & comprehensive health insurance - **up to 4% premium savings**
- Life: occupational disability, old-age provision (**up to 5.5% premium reduction**) - special conditions also apply to family members and life partners
- Additional **discount package** up to 15% (Ergo), up to 20% for property insurance (DBV)
- All offers **also apply to relatives** living in the household



Partners for finances and building purchase savings

Wüstenrot:

- **Building purchase savings** from €10.000: As a cash investment or for financing housebuilding (up to €50.000 without land register entry)
- **Financing housebuilding:** Attractive interest rate (savings of up to several thousand euros), provision of interest-free period, unscheduled repayments, combination with subsidies (KfW).
- 10% **housing subsidy** at €700 / €1.400 per year
9% **employee savings allowance** for capital-formation benefits.
€200 **youth bonus** up to 25 years of age
- Comparison with other financial institutions
- **Instant access savings account**
- High-quality **gift** on conclusion of contract



Leisure time I Culture

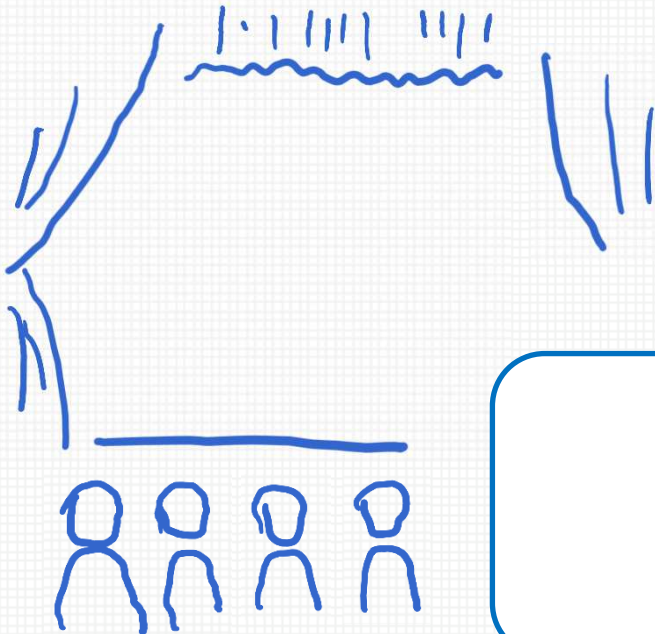
“Distel” Cabaret, Berlin
15% discount on up to 2 tickets)

WhatAGame (Berlin) 25%
discount for 12 or more
participants

German History Museum
20% discount

Benefits.me up to 77%
discount

Selected events at **“Ernst-
Deutsch-Theater”**
via Hamburg District



Leisure time II Travel and mobility

GEW Holidays
up to 20% discount

Salzhaff holiday accommodation
Up to 25% discount

Marco Polo group tours

WeinRadel tours
e-bike hire worth up to
€150

SportCAMPs
voucher €50

Up to 10% discount
on **AVIS** car hire in
Germany

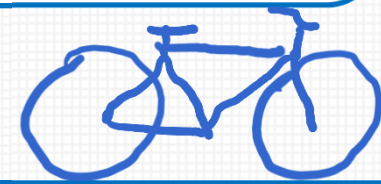
SoFlow
E-Scooter
with 10% discount

Leisure time III Health and sport

E-bikes from Zündapp
with 12% discount

Yamaha Booster up to
45% discount

Work clothing with
15% discount



Biketour.Guide
save 1/3 and 6
months free

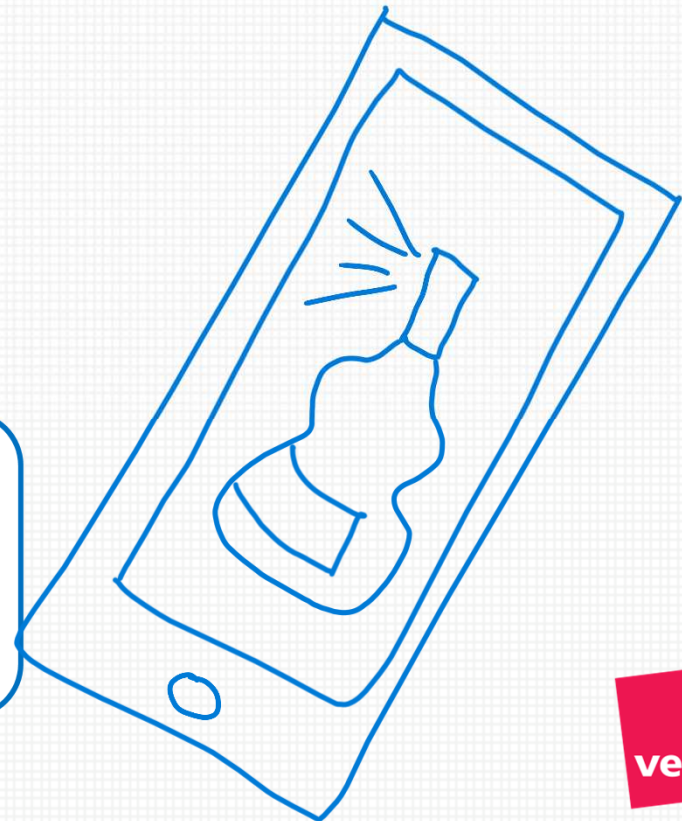
Hansefit
Work out for €62.50 a month at
over 6.000 facilities (fitness
studios, swimming pools, etc.)
throughout Germany.

Leisure time IV: Stylish living

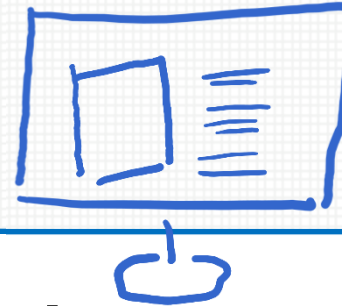
Moviepark
up to 40% discount.

Ooia.de
10% discount in on-line
shop

Thiemann Parfümerie
10% discount in on-line shop



All this and much more ...



... can be found here:

<https://verdi.de/service>

Podcast [DeinXtra Podcast - monthly audio information about our members service](#)

<https://meine.verdi.de>

<https://verdi-mitgliederservice.de>

Online meetings on various topics, e.g. pensions, emergency records, official liability, energy efficiency and much more

If you have questions:
manuela.colombe@verdi.de



Let's create a network!

**You are welcome to send
questions, suggestions and
wishes to
kontakt@verdi-servicegmbh.de**

Newsletter

<https://www.verdi-mitgliederservice.de/index.php/newsletter>

Facebook

<https://www.facebook.com/ver.diMitgliederservice>

Instagram

<https://instagram.com/verdi.mitgliederservice>

LinkedIn

<https://www.linkedin.com/company/ver-di-service-gmbh/>